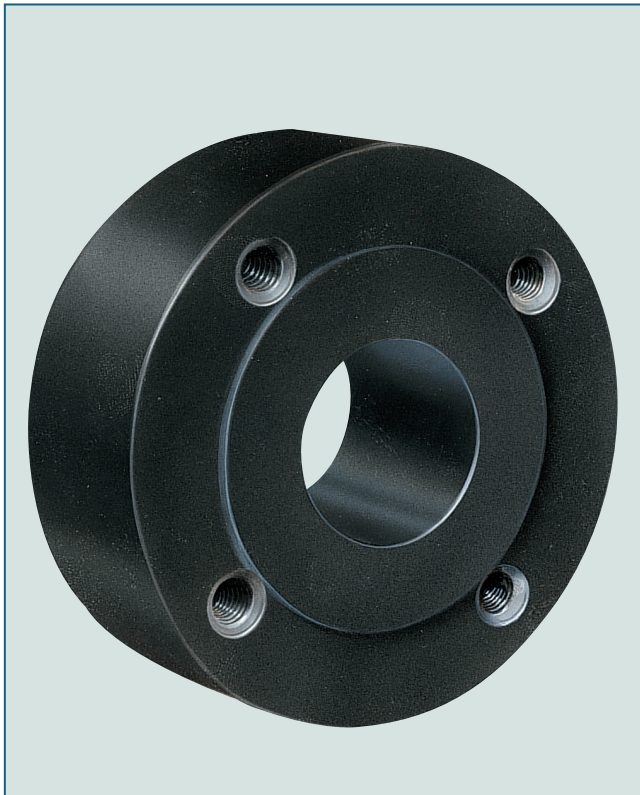


PIPE CONNECTOR FLEX

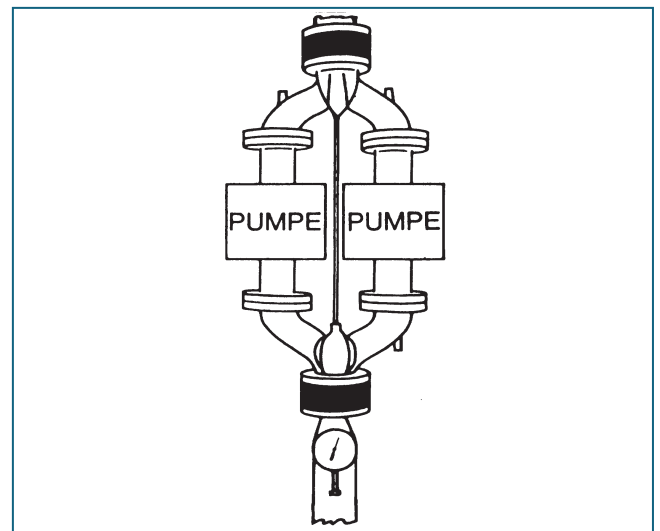
ΑΝΤΙΚΡΑΔΑΣΜΙΚΟΙ ΣΥΝΔΕΣΜΟΙ



TECHNICAL DATA

Nominal diameter:	DN 20 - DN 200
Face-to-face:	EBRO works standard
Flange accomodation:	DIN 2501 (PN 6 and PN 10)
Flange surface design:	DIN 2526, Form C-E vulcanized, no additional seals required
Temperature range:	-20°C to +120°C (depending on pressure and medium)
Operating pressure:	max. 10 bar
Body:	EPDM (Ethylene propylene caoutchouc)

The flexible pipe connector **must not** be used as a compensator!

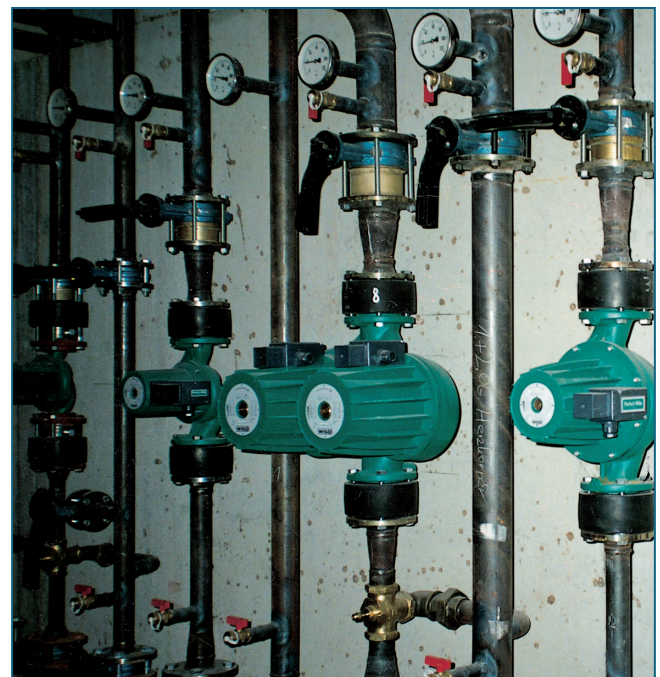


FEATURES

- Flexible pipe connector for noise reduction in public buildings
- Excellent heat and age-resistance
- Electric non-conductive
- Short face-to-face, simple installation
- Can be installed in any desired position
- Maintenance-free

GENERAL APPLICATION

- Civil engineering
 - Plant engineering
- Suitability acc. to TÜV test no. 9102098





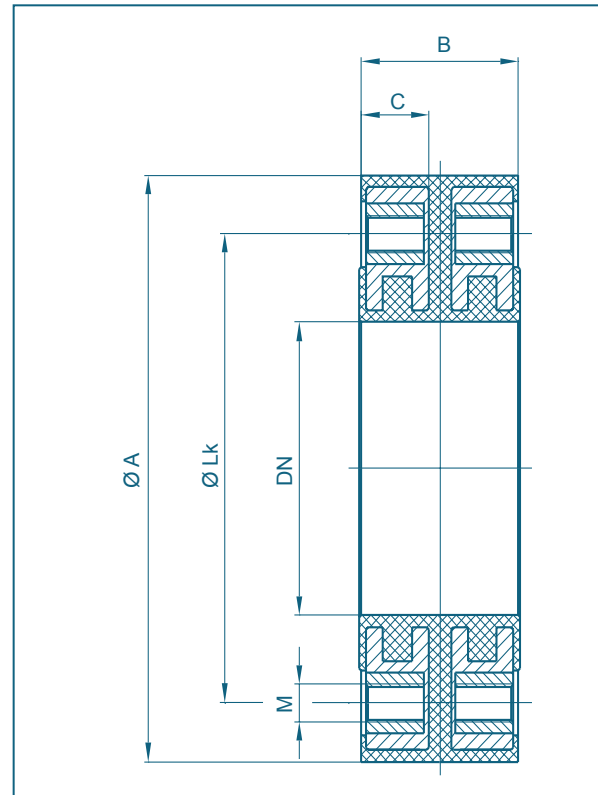
CHRYSSAFIDIS

PIPE CONNECTOR FLEX

INSTALLATION NOTES

The pipe connected must be provided with adequate fixed supports. The mating faces of the flanges must be flat and the flanges must bear against the whole of the sealing faces on the pipe connectors. DIN 933 hexagon head bolts and washers are used to secure to the mating flanges. Recommended bolt lengths will be found in the table below. Excessively long bolts will damage the rubber body. A small amount of compression is useful when fitted. The connectors must not be subject to tensile, shear (misalignment), torsion (twisting) or bending stresses. The pipe connectors should be inspected every year when the system is inspected and should be carefully checked over after five years.

Pipe connectors which have already been in service should not be re-used. It is helpful for no paint finish or lagging to be applied. The connectors provide good thermal insulation. No substances likely to damage the rubber should be added to the water in the heating system.



DN [mm]	PN 6						Dimensions [mm]						PN 10					
	A	B	C	Lk	M	Number of bolts	A	B	C	Lk	M	Number of bolts						
20	90	70	25	65	M10	4	105	70	30	75	M12	4						
25	100	70	25	75	M10	4	115	70	30	85	M12	4						
32	120	70	30	90	M12	4	140	70	30	100	M16	4						
40	130	70	30	100	M12	4	150	70	30	110	M16	4						
50	140	70	30	110	M12	4	165	70	30	125	M16	4						
65	160	70	30	130	M12	4	185	70	30	145	M16	4						
80	190	70	30	150	M16	4	200	70	35	160	M16	8						
100	210	70	35	170	M16	4	220	70	35	180	M16	8						
125	240	70	35	200	M16	8	250	70	40	210	M16	8						
150	265	70	35	225	M16	8	285	70	40	240	M20	8						
200	-	-	-	-	-	-	340	85	50	295	M20	8						

Lk = Pitch circle diameter of holes

C = Bolt length for welded flanges acc. to DIN 2631/32

Subject to change without notice