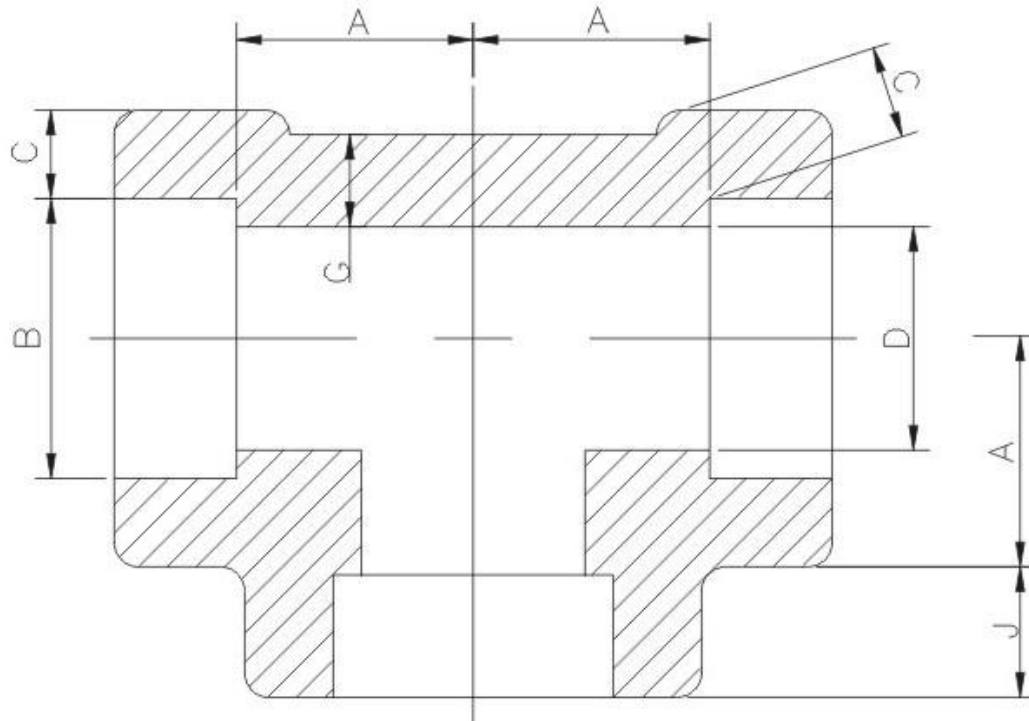




CHRYSSAFIDIS

ΑΝΟΞΕΙΑΔΩΤΑ ΤΑΥ 3000 lb ΚΟΛΗΤΑ

1085xxA 1/1



DN	NPS	A	B	C		D	G	J
				Ave	Min			
6	1/8"	11	11.2 10.8	3.18	3.18	7.6 6.1	2.41	9.5
8	1/4"	11	14.6 14.2	3.78	3.3	10 8.5	3.02	9.5
10	3/8"	13.5	18 17.6	4.01	3.5	13.3 11.8	3.2	9.5
15	1/2"	15.5	22.2 21.8	4.67	4.09	16.6 15	3.73	9.5
20	3/4"	19	27.6 27.2	4.9	4.27	21.7 20.2	3.91	12.5
25	1"	22.5	34.3 33.9	5.69	4.98	27.4 25.9	4.55	12.5
32	1-1/4"	27	43.1 42.7	6.07	5.28	35.8 34.3	4.85	12.5
40	1-1/2"	32	49.2 48.8	6.35	5.54	41.6 40.1	5.08	12.5
50	2"	38	61.7 61.2	6.93	6.04	53.3 51.7	5.54	16
65	2-1/2"	41	74.4 73.9	8.76	7.67	64.2 61.2	7.01	16
80	3"	57	90.3 89.8	9.52	8.3	79.4 76.4	7.62	16
100	4"	66.5	115.7 115.2	10.69	9.35	103.8 100.7	8.56	19

unit:mm

CHRYSSAFIDIS S.A.
 ATHENS: 3 AGRINIOU STR, TAVROS - (+30) 210 4836315-20 /
 THESSALONIKI: DA12A STR, OT32, BIPE SINDOU - (+30) 2310 754681-4 /
 www.chryssafidis.com / sales@chryssafidis.gr

CHECK BY	DRAWING BY	DATE	SPECIFICATION	TEES 3000LB SOCKET
	<i>Julie</i>	Aug.16.2004	MATERIAL	FORGED
			PROCESS/Nr.	
			UNIT / SCALE	mm

△			
△			
△			
Revise	Description	Date	Approve
DRAWING NO. HF22		-04	